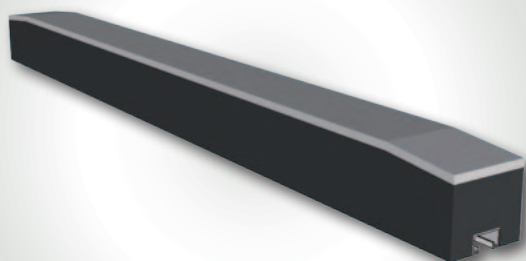
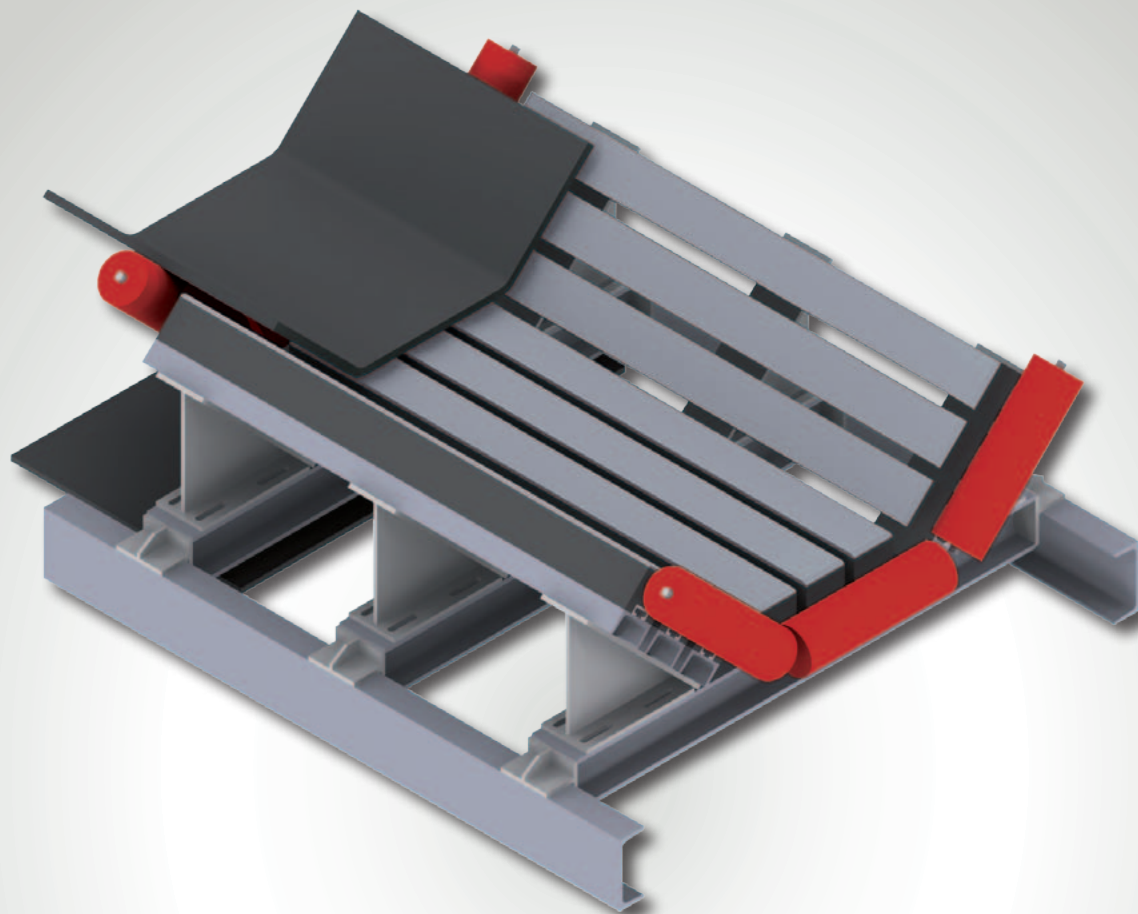




Industrie

# REMASLIDE

## Impact Cradles & Impact Bars





Industrie

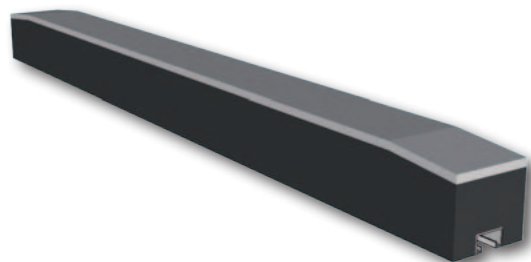
# PRODUCT PROGRAM

## REMASLIDE LF impact bars

The **REMASLIDE** impact bars, due to their special rubber substrate, absorb the drop energy of material impact.

The newly-developed low-friction surface in highly wear-resistant polyethylene increases the service life by **more than 30%** compared to other manufacturer's slider bars.

The reduction in friction means that energy requirements are lower.



Item No.	Designation	Dimensions
539 0670	REMASLIDE LF Set KG-02	52 x 100 x 1220 mm
539 0680	REMASLIDE LF Set KG-03	80 x 100 x 1220 mm
539 0690	REMASLIDE LF Set KG-04	100 x 100 x 1220 mm

## REMASLIDE A impact bars

**REMASLIDE A** impact bars are “suitable for ATEX zones”, since they can be classed as conductive in accordance with the ATEX Directive\* (volume resistivity and surface resistance  $< 10^6 \Omega$ ).



Item No.	Designation	Dimensions
539 0700	REMASLIDE A Set KG-02	52 x 100 x 1220 mm
539 0710	REMASLIDE A Set KG-03	80 x 100 x 1220 mm
539 0715	REMASLIDE A Set KG-04	100 x 100 x 1220 mm

\* **REMASLIDE A** has a surface resistance and volume resistivity of  $< 1 \times 10^6 \Omega$  and is therefore classed as anti-static according to DIN IEC 60093 / VDE 0303 T30 and thus suitable for use in ATEX plant. It should be noted that Directive 94/9/EG “ATEX” only deals with equipment and protection systems. This means that the overall system of the plant must be taken into consideration. As a result, impact bars cannot receive an independent EU type certificate.



# REMASLIDE impact cradle

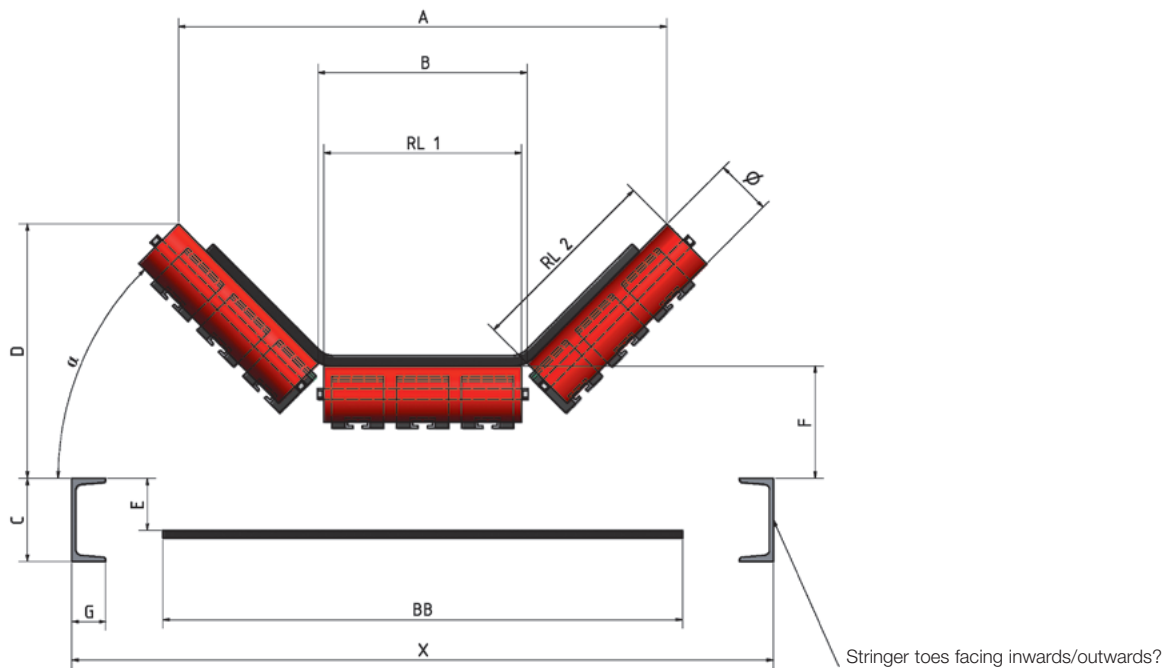
**REMASLIDE** impact cradle as a shock absorber for conveyor belt feeder points and transfer stations.

Support across the full surface at the feeder points and transfer stations means that damage to the belt is avoided. The **REMASLIDE** impact bars, due to their special rubber substrate, absorb the drop energy of material hitting them. Their low-friction surfaces made from wear-resistant UHMW polyethylene ensure a long service life.

The impact cradles are configured and manufactured according to customer specifications.

## Advantages

- Ready-to-fit cradle, made to fit the specific conveyor belt
- Stable construction
- Professional installation by **REMA TIP TOP** Service
- Three different types of **REMASLIDE** impact bars available to match the corresponding loading



Please enter all of the data to receive an individual offer from REMA TIP TOP!

<b>A</b>		mm
<b>B</b>		mm
<b>C</b>		mm
<b>D</b>		mm
<b>E</b>		mm
<b>F</b>		mm
<b>G</b>		mm
<b>RL 1</b>		mm
<b>RL 2</b>		mm

<b>BB (belt width)</b>		mm
<b>X</b>		mm
$\alpha$		°
<b>Stringers toes facing inwards/outwards?</b>	<input type="checkbox"/> Inwards-facing <input type="checkbox"/> Outwards-facing	
<b>Conveyor belt</b>		
<b>Drop height</b>		mm
<b>Max. grain size</b>		mm

Your local contact

582 0751 - III.13 Printed in Germany

**REMA TIP TOP GmbH**  
**Business Segment Material Processing**

Gruber Strasse 63  
85586 Poing, Germany  
Germany

Phone: +49 8121 70710-245  
Fax: +49 8121 70710-222  
[www.rema-tiptop.com](http://www.rema-tiptop.com)

