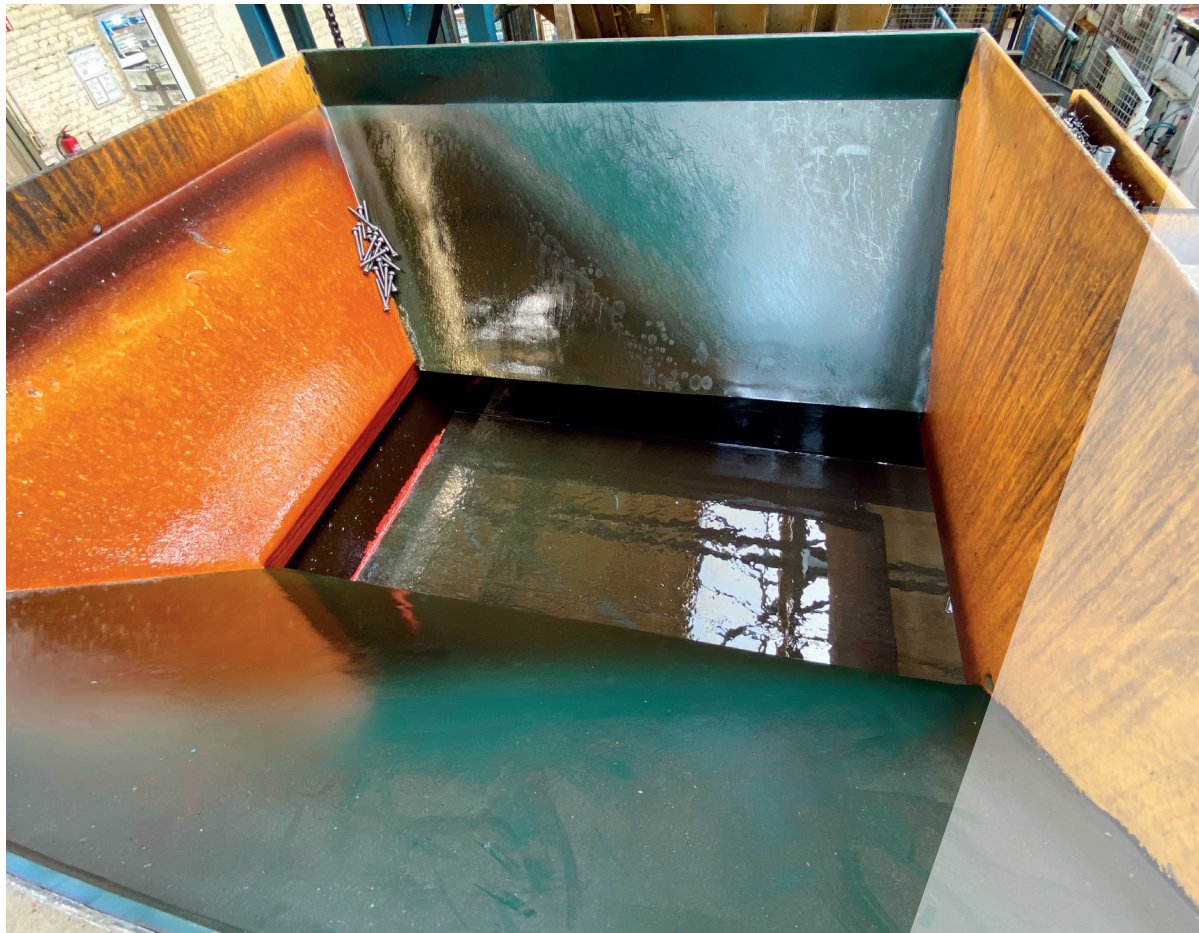
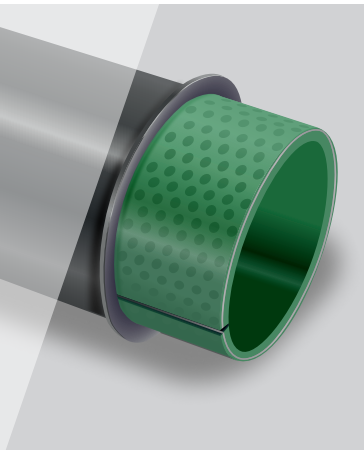
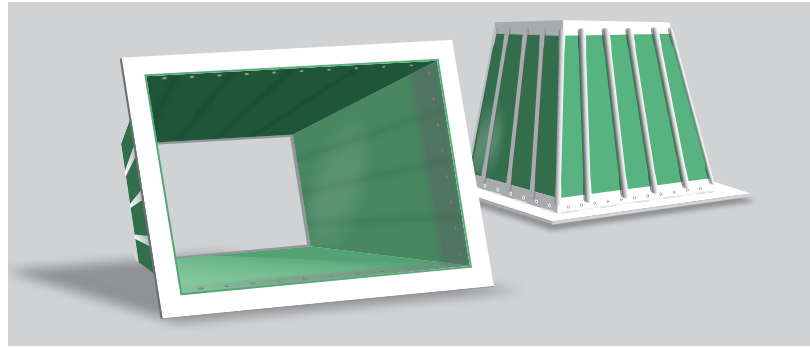
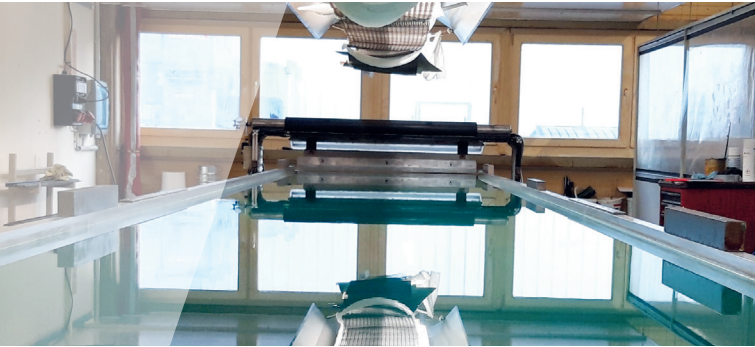




// ONE BRAND // ONE SOURCE // ONE SYSTEM



REMATHAN

High-quality polyurethane lining material

Highly abrasive material - especially with oil or grease content - can cause damage to pipes, hoppers or bunkers. Possible consequences are unplanned downtime and a shortening of the service life of your plant.

REMATHAN provides optimal protection against abrasion, oils and greases. Thanks to the perforated sheet insert, the lining material can be easily cut to size on site and quickly installed or replaced by screwing.

RUBBER LININGS FOR WEAR PROTECTION

REMATHAN – High-Quality Polyurethane Lining Material

INDUSTRIES

REMATHAN is successfully used in industries with a wide range of challenges.

- Concrete & Cement industry
- Ore dressing
- Sand & Gravel
- Recycling Industry
- Metal industry
- Bulk material conveying

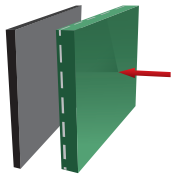
Properties

- Extremely high wear resistance
- Very good oil and grease resistance, including formwork oils
- Noise-reducing
- Applicable from -30°C to max. +80°C

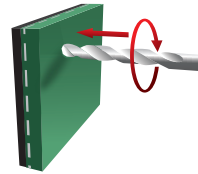
Advantages

- Reduces operating costs by avoiding wear-related downtime
- Reduces caking and increases occupational safety
- Reduces maintenance work and intervals
- Quick application due to the perforated plate reinforcement

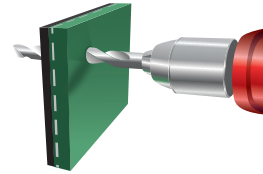
Processing – Assembly



Place REMATHAN wear protection plate on component



REMATHAN wear protection plate and component to be drilled through (hole diameter 8.5 mm)



Screw on the REMATHAN wear protection plate with the help of the nut, washer and the countersunk head hexagon socket screw.



Screw "dips" into the REMATHAN wear protection plate and thus offers no additional point of attack for caking or wear.



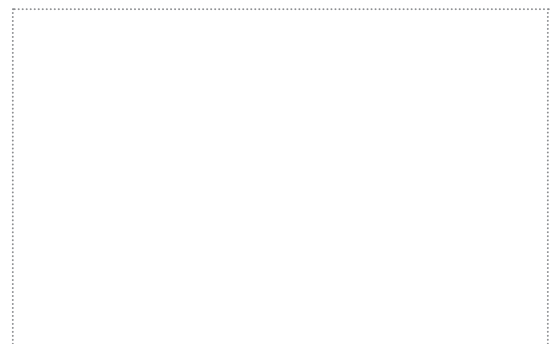
Screw connection

We recommend screwing with self-tapping sheet metal screws, plate screws or countersunk hexagon socket screws.

Item no.	Designation	Dimensions
573 1043	REMATHAN G75 LB	8 x 1 000 x 2 000 mm
573 1044	REMATHAN G75 LB	10 x 1 000 x 2 000 mm
573 1045	REMATHAN G75 LB	12 x 1 000 x 2 000 mm
573 1046	REMATHAN G75 LB	15 x 1 000 x 2 000 mm
573 1047	REMATHAN G75 LB	20 x 1 000 x 2 000 mm
573 1049	REMATHAN G75 LB	30 x 1 000 x 2 000 mm



REMA TIP TOP AG
 Gruber Strasse 65 - 85586 Poing / Germany
 Phone: +49 8121 707-100
 Fax: +49 8121 707-10 222
 info@tiptop.de
www.rema-tiptop.com



Your local contact